

Discovering Community Paramedicine in British Columbia



Presented to
BC CRN - May 21, 2019

Takeaways

1. Awareness of program's goals and services
2. Understand where in BC the program exists
3. Learn how to connect community members with the program



Community Paramedicine in BC

Improving access to health care in rural and remote communities by expanding the role of qualified paramedics.



Program Objectives

- Stabilize **paramedic staffing** in rural and remote communities
- Bridge **health service delivery gaps**, identified in collaboration with local primary care teams



Partners & Stakeholders



- Provincial Advisory Committee
- Evaluation Advisory Committee
- Practice Working Group
- Regional Steering Committees

Access to Services

- 99 rural & remote communities (and surrounding areas)
- Patients' referred by their doctor or other primary health care provider
- Service provided at no cost to the patient



Communities

Northern	<ul style="list-style-type: none"> • Atlin • Burns Lake • Chetwynd • Dawson Creek • Dease Lake • Fraser Lake • Fort Nelson 	<ul style="list-style-type: none"> • Fort St. James • Fort St. John* • Granisle • Hazelton • Houston • Hudson's Hope 	<ul style="list-style-type: none"> • Mackenzie • Masset • McBride • Kitwanga • Prince Rupert* • Smithers • Southside 	<ul style="list-style-type: none"> • Stewart • Tumbler Ridge • Valemount* • Vanderhoof • Village of Queen Charlotte • Wells
Interior	<ul style="list-style-type: none"> • Alexis Creek • Anahim Lake • Ashcroft • Barriere • Blue River • Castlegar • Chase • Clearwater • Clinton • Cranbrook* 	<ul style="list-style-type: none"> • Creston • Edgewood • Elkford • Field • Fruitvale • Gold Bridge • Golden • Grand Forks • Greenwood • Kaslo 	<ul style="list-style-type: none"> • Keremeos • Kimberley • Lillooet • Logan Lake • Lumby • Lytton • Merritt • Midway • Nakusp • New Denver 	<ul style="list-style-type: none"> • Osoyoos • Princeton • Revelstoke • Riondel • Rossland • Salmo • Seton Portage • Sicamous • Sparwood • Winlaw
Island	<ul style="list-style-type: none"> • Alert Bay • Campbell River* • Chemainus • Cortes Island • Denman Island (incl. Hornby Island) 	<ul style="list-style-type: none"> • Gabriola Island • Ganges * • Galiano Island • Gold River • Lake Cowichan • Mayne Island • Pender Island 	<ul style="list-style-type: none"> • Port Alice • Port Hardy • Port Renfrew • Port McNeill • Quadra Island • Sayward 	<ul style="list-style-type: none"> • Sointula • Sooke • Tahsis • Tofino • Ucluelet • Zeballos
Coastal	<ul style="list-style-type: none"> • Bella Bella • Bella Coola • Bowen Island 	<ul style="list-style-type: none"> • Madeira Park • Texada Island • Pemberton • Powell River 	Fraser	<ul style="list-style-type: none"> • Boston Bar <p>* indicates RACCP community</p>

Population Profile



Older people living on their own:

- Living with chronic conditions:
 - heart failure
 - chronic obstructive pulmonary disease
 - diabetes
- At a risk of falls
- Need support with a palliative approach to care



CPs in the Community





Community Outreach & Awareness

5,159 events attended
(Jan 2016 to Mar 2019)

- Promote the role
- Establish community presence
- Explore collaboration
- Understand community needs



Health Promotion

2,228 events attended
(Jan 2016 to Mar 2019)

- Support members of the community in managing their health
- Champion healthy living
- Provide education





Wellness Clinics

2,235 events attended

(Jan 2016 to Mar 2019)

- Support Health Care Teams with existing clinics or events
- Attend local health fairs



Home Visits



Wellness Checks

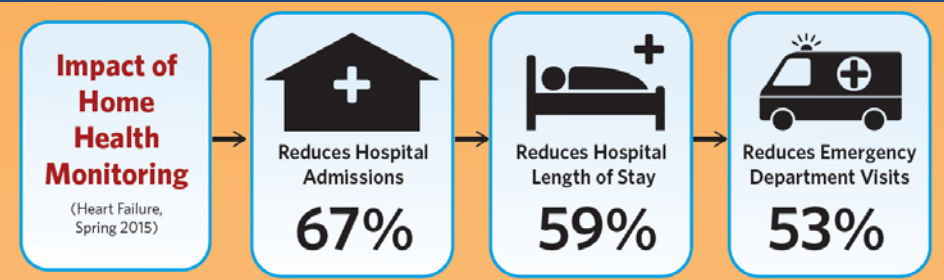


- Regularly scheduled visits in the home
- Help patients stay connected with their care team
- Support patients in managing their health and support health literacy
- Look for fall hazards in the home
- Refer patients to the right health care resource when they need additional help

24,447 services provided & 1,874 patients seen

(Jan 2016 to Mar 2019)

'I feel less anxious and more relaxed knowing that my CP and doctor are seeing my readings and are that much more watching out for me'



Home Health Monitoring

Virtual monitoring and education tool for those with chronic conditions. 167 patients enrolled

(as of April 23, 2019)



Program Information & Referrals

- Program & Patient Brochures
- Referrals via local care teams:
 - Physicians
 - Nurse Practitioners
 - Home & Community Care Nurse
 - First Nations Health Clinics

Additional References



BCEHS website (www.bcehs.ca)

- Community Paramedicine

PHSA YouTube videos

- BCEHS Community Paramedicine
- Community Paramedicine Alexis Creek & Stone Reserve



Emergency Response

Community Paramedics will not generally be asked to respond to 911 emergencies when working as a CP.

Exception:

If there is a significant emergency incident and the CP is the closest responder to the scene.





Thank You!